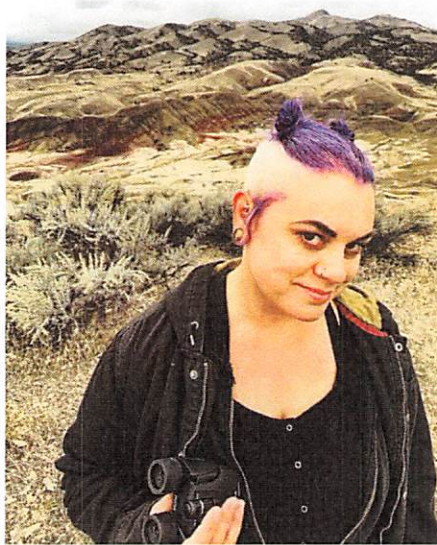


Thanks to the funding from the Oregon Community Foundation NAMI Lane County has had the opportunity to expand our current staff positions to increase our capacity to grow our programs and services available for the community.

**Congratulations Sarah Merkle,
NAMI's new Development Director**



Sarah Merkle joined the NAMI Lane County team as the Programs Manager in July 2016 shortly after moving to Eugene. Since then, they have helped implement new processes for database management and data collection and reporting, been integral in the negotiation of contracts with key funders like Trillium and PeaceHealth, and successfully written grants that resulted in over \$110,000 of support from ten new funders in the community. They have presented at several community conferences and continue to engage in education and advocacy for the rights of individuals living with mental health conditions, particularly those in the LGBTQIA+ community. During their time as Programs Manager, they added three new signature program education courses to the NAMI Lane County roster, expanded both Family and Connection Support Groups into key rural communities, and added three new Connection Support groups in Eugene/Springfield, including one specifically for individuals who identify as LGBTQIA+ and one for individuals who identify as survivors of a suicide attempt.

Outside of their work with NAMI, Sarah spends their time reading, writing, gardening, traveling, collecting VHS tapes, doting on their dog, Poppins, and exploring the exquisite flora and fauna that Oregon has to offer with their family, friends, and partners. Sarah is extremely excited for their new role as Development Director and is looking forward to continuing to bring financial and programmatic stability to NAMI and allowing us to serve more of our amazing clients, volunteers, families, and community members.

**Congratulations AimieLisa Hook,
NAMI's new Programs Manager**



AimieLisa Hook joined NAMI Lane County as the Volunteer Coordinator in December 2018. During 2019, AimieLisa worked hard to create a clear and concise volunteer orientation and onboarding process for interested volunteers. Through this process, over 57 volunteers were able to be trained and placed in volunteer positions during the past year. In addition, AimieLisa advocated for and helped organize the first IOOV trainings in Lane County. They were able to increase the IOOV program by 81% with a total of 30 presentations being done in Lane County in 2019. AimieLisa was excited to build volunteer creativity and enthusiasm as they coordinated an art group, rock painting group, and volunteer appreciation awards. They also got to appreciate the NAMI events while coordinating all the volunteers at the 2019 NAMI Walks and Holiday dinner.

AimieLisa is looking forward to her new role as the Program Manager. Over the course of this next year, AimieLisa hopes to better meet the needs of the volunteers and programs by creating an atmosphere in which volunteers and facilitators are being heard, empowered, and fulfilled in their roles. They are striving to promote sustainability in the current programs while also finding opportunities to launch new programs in the rural areas of Lane County.

When AimieLisa is not busy at work they are studying to complete their MA in Clinical Mental Health Counseling. In those joyous moments of no school and no work AimieLisa enjoys relaxing outdoors, cooking great food, seeing shows, and exploring all that Oregon and Eugene has to offer.